

17.500m
57'4"

The complete **housing** **package** from Bradfords

17.500m
57'4"



Bradford's
Growing with the community since 1770

www.bradfords.co.uk

One stop solution

The Bradfords Group is well-known for providing all of your building material needs under one roof. However, customers can now benefit from our expertise, thanks to the Bradfords Complete Housing Package.

Whether a 'Traditional Construction' or 'Timber Frame' build, our team of consultants can assist every step of the way. Whatever your need, Bradfords offers a 'One-Stop Solution' – helping you to Build on **Your** Experience.

The Bradfords Group

Bradfords Building Supplies Ltd

Headquartered in Yeovil, Somerset, Bradfords has been supplying building materials for over 200 years. Today we are one of the largest independent builder's merchants in the UK, with 26 branches throughout the South West, Herefordshire and Worcestershire. We continue to open new outlets every year, and our branches are networked to provide exceptional resources for all building materials and products.

With a turnover in excess of £90m, we have the buying power to stock the best quality and the widest range of products, whilst offering our

customers the most competitive prices, knowledge and support across many specialised building areas.

We have always recognised that a good and helpful service is dependent on the ability and enthusiasm of our people and we know how much difference this makes to the lives and business of our customers.

Bradfords has one of the most highly-regarded reputations in the building industry for staff development and training and we're proud to have been awarded "Investors in People" accreditation.

Bradfords Timber Supplies Ltd

Our timber company is one of the UK's leading importers and processors of imported timber. Operating from eight strategically located sites, we are committed to providing our customers with sustainable, chain of custody-accredited wood. We offer both FSC (Forest Stewardship Council) and PEFC (Programme for the Endorsement of Forest Certificate) certificate schemes. We are

also signatories to the Timber Trade Federation's Responsible Purchasing Policy (RRP).

With considerable experience in timber engineering, we can also offer advice on the design and fabrication of trussed rafters, engineered wood floor systems and timber frame housing.

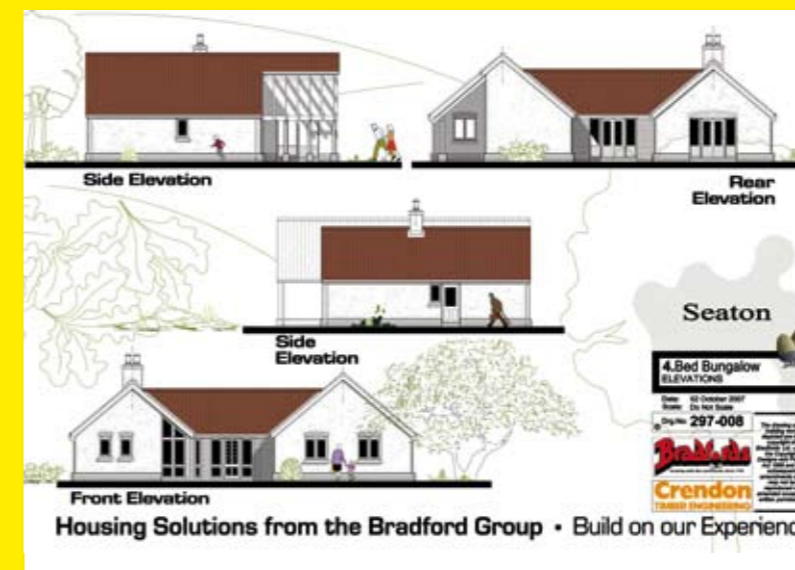
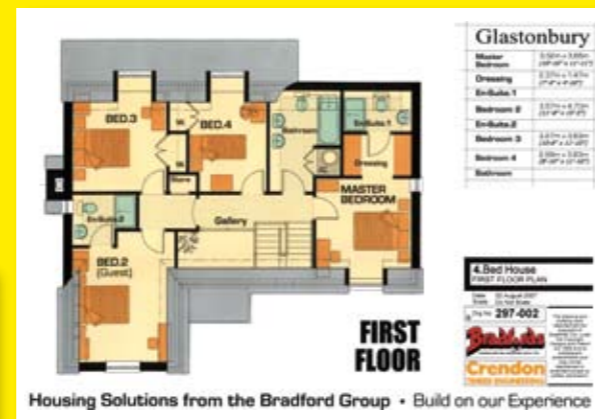


Planning **your** designs

Planning your designs couldn't be simpler. Bradfords offers a range of project schematics – from bungalows to four-bedroom houses.

Our 'Timber Frame' houses are available in standard open panel timber frame or in Super E format – a type of construction that meets level three requirements of the Code for Sustainable Homes.

For further information please contact our marketing department at marketing@bradfords.co.uk



13.000m
42-8"



Building together – how we can help you with the build process.

**BUILD
ON OUR
EXPERIENCE**

Pre-Project Involvement

We welcome client involvement in the project planning stages, and as part of our partnership arrangements, we can offer advice on using the best products and technology available. This information helps clients to make the right material decisions prior to the start of construction.

Dedicated Support

We will allocate an experienced member of staff to provide the necessary support throughout the build process. This person will be your normal point of contact and ensure that deliveries are made according to the build programme.

Careful Scheduling & Free Take Off

Once the plans are agreed, we will provide you with free take-off and estimating services; ensuring that your budget goes even further.

Delivery Service

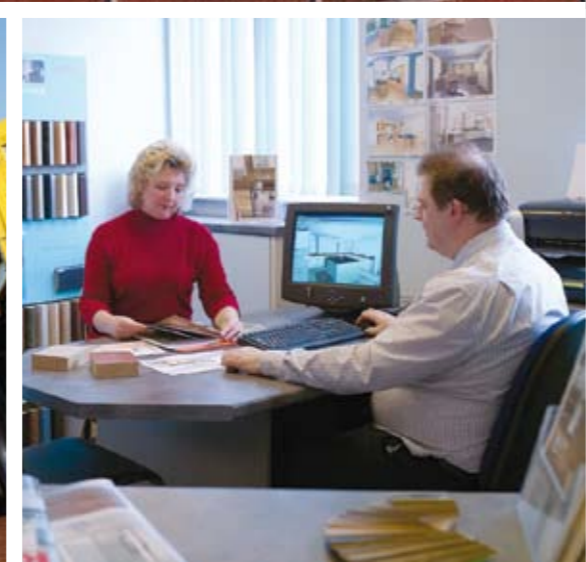
We also have a fleet of delivery vehicles with crane offload facilities.

Account Facilities

Monthly account facilities are available across the branch network (subject to status with agreed terms). E-commerce options are also available, with the added benefit of email invoices.

The advantages of trading with the Bradfords Group

- The complete package under one roof
- Everything from one source leads to:
 - Quicker decision-making
 - Limiting the supply chain – cutting waste
 - Reducing paperwork
- Better co-ordination of site deliveries, applying 'just-in-time' principles to reduce stock damage and help prevent theft
- Reduced material transportation thanks to local availability – meaning a faster service and the reduction of carbon emissions



The Timber Frame housing package

Through our Timber Engineering Division, we can provide a complete design, manufacture and installation service for panelised Timber Frame dwellings, truss rafters and engineered floors.

What are the benefits of Timber Frame?

Though Timber Frame is well known for its sustainability credentials, it also offers a number of commercial benefits. In most cases a Timber Frame superstructure is erected in only a third of the time taken to construct a masonry-built project.

The savings to be had in preliminary costs are substantial, and exposure to risk is greatly reduced. This is reflected in the overall build cost.

A factory-built Timber Frame house offers the following advantages:

- A high level of accuracy and quality
- Simplified on-site construction
- Greater control to the construction process
- Often exceeds current building regulations
- Fire resistant
- Fewer defects and high customer satisfaction
- Improved construction through Health and Safety Environmental Credentials

Environmental Credentials

Timber is effectively a Carbon-Neutral material. Timber Frame has the lowest CO₂ cost of any commercially available building material. In Europe more trees are now being planted than are harvested – ensuring a sustainable future.

With increasing demands such as the Code for Sustainable Homes and stricter building regulations timber is a responsible and logical solution.

The Product Range

Timber Frame: Our Timber Frame products are designed to meet a number of Modern Methods of Construction (MMC) using Off-Site Manufactured (OSM) Timber Frame panels, suitable for both individual self builds and multi-occupancy developments. By using products that are stocked in-house, we can ensure our customers choose the best materials for the job, helping them finish on time and on budget.

Super-E[®] Homes: Canadian Super-E[®] Technology offers high levels of energy efficiency using airtight construction and insulation.

Eco-Joists: As an increasingly popular Timber-Framed house feature, the Eco-Joist offers many advantages. Designed to reinforce the frame itself, the product comprises a metal weave, fortifying the joist. Due to the “W” formation of the weave, an open void is naturally created, allowing free running of M&E and HVAC installations, and a quicker process overall.

Timber Trusses: A network of experienced trained timber truss designers and fabricators are on hand to assist with your requirements. With the ability to accommodate larger trusses and more complex structures, our contract managers can assist with installation.

Trus Joist engineered wood products: As a stockist of Silent floor systems, Bradfords offers a number of associated timber innovations, including: TJI joists - for larger span floors and roofs, Parallam PSL - for structural beams and columns, TimberStrand LSL - for lintels and structural beams and Spatial Roof - creating attic rooms with more space.

What makes a Super E[®] house?

Super E[®] Housing is a Canadian government initiative devised to export Canada's expertise in wood-frame housing to environmentally-conscious, quality-focused builders around the world.

A Super E[®] house is designed, built and tested to meet strict performance and warranty standards, ensuring an extremely durable building. However, the focus on performance does not come at the

expense of design – Super E[®] homes can be built in a variety of styles, sizes and layouts to reflect the design vision for any building project.

A Super E[®] home is designed as a system, factoring in the local climate, the building envelope (walls, roof and floor) and the mechanical system. The plans for every Super E[®] house are evaluated using an energy analysis software tool – HOT2000 – enabling the designer to achieve optimal energy performance by considering all of the factors that will affect the home's energy consumption.

The key to the Super E[®] approach is controlling heat, air and moisture flows. High levels of insulation ensure that the home is affordable to heat and cool and that a comfortable living temperature can be maintained. A well-sealed air barrier makes the house draft-free and very quiet. A high-quality mechanical ventilation system controls indoor humidity and ensures a continuous supply of fresh air for occupant comfort. Energy-efficient windows reduce heat loss and minimize condensation.

To be recognized as a Super E[®] home, the building must pass an air tightness test post-construction. Test results, along with approved design details, ventilation system details and as-built specifications must be submitted to the Super E[®] house programme to confirm compliance with the technical standards. Only houses that have passed this stringent third party review and testing are eligible for registration.

What are the benefits of a Super E[®] home?

Super E[®]'s advanced housing technology comprises a quiet, clean and durable living space that is:

- **Healthy** – Super E[®] homes are built with healthy building materials to create a healthier indoor environment. Whole-house ventilation and climate control systems provide the best indoor air quality.
- **Energy efficient** – Years of research and development deliver an extremely energy-efficient building. Lower operating costs also reduce the monthly cost of home ownership.
- **High quality** – Super E[®] uses superior designs, products and systems. All meet strict performance standards to ensure a high-quality house – proven, third-party tested and registered.

- **Comfortable** – Super E[®] homes are well-insulated and draft-free, allowing easy control of indoor temperature and humidity. Effective ventilation systems deliver fresh air throughout.

- **Attractive** – Your design vision is not compromised when you build a Super E[®] home. Virtually any size, style or layout of home can be designed to meet Super E[®] standards.



General Product Range

All our branches stock an unrivalled range of specialist building products from leading manufacturers.

Bathrooms

We have a number of products on display in our showrooms, including Ideal Standard's Art & Design bathroom suites range, Mira, Showerlux and Manhattan showering equipment, and bathroom furniture by Be-Modern.

Bricks

We offer facing bricks from all the leading manufacturers, including handmade, machine-made and re-claimed products.

Construction Materials

Our range of construction materials continues to grow, and our offerings now include insulation blocks, aggregates, concrete blocks, cement, plaster, plasterboards and flue systems.

Decorating

Bradfords stocks both Dulux and Glidden paint, with mixing facilities in-store. Adhesives, wood care, sealants, paint, tapes, and brushes are also available.

Door & Windows

We keep a range of standard products in stock, including staircases, internal and external door kits, high performance door sets and frames.

All are selected from leading manufacturers 'Jeldwen' and 'Premdoor'.

Drainage

A comprehensive selection of products, including UPVC drainage, manhole covers, Klargest Sewerage and SUD's Systems are now available.

Fixings

Our stores offer everything from nails, screws, bolts and nuts to wall plugs, cavity fixings and masonry nails.

Garage Doors

Bradfords offers a range of garage doors in steel, timber and GRP; both steel sectional and fully finished doors.

Insulation

Selections of wall, roof and floor insulation products are available in-store.

Ironmongery

A wide variety of standard and architectural ironmongery designs are now in stock are – including shelving systems, hinges and door closers.

Kitchens

We have carefully selected a range of kitchens from several leading manufacturers, including Keller, Sheraton and Symphony. We also stock appliances and white goods from Electrolux, Zanussi, AEG and Rangemaster.

Landscaping

Bradfords stocks an extensive range of landscaping products – everything from paving, walling, decking, fencing, garden furniture and decorative elements. We can provide ideas for all styles and all budgets.

Metal Product

Birtley steel lintels, castings, manhole covers, joist hangers, restraint straps, wall ties and framing anchors are all available.

Roofing

Our roofing product, comprise concrete and clay tiles, natural and asbestos-free slates, and ventilation products. We also supply a range of roofing felts including torch-on and pour-roll treated batten.

Timber

Our sustainably-sourced timber products come in a host of different offerings: sawn carcassing, treated and untreated, prepared timber, mouldings, stairs, stair-parts and door-lining sets.

Tools

All products from a variety of manufacturers: wheelbarrows, shovels, hand tools, power tools, cement mixers, builders tools, cutting discs, abrasives, ladders, road cones and safety fencing.



Available from an increasing number of branches is a full tool hire service. We offer top quality branded equipment that is expertly serviced and complies with all safety guidelines.

Sustainability

We supply a range of energy saving, sustainable and ecologically friendly building products, including:

- Envireau rainwater system, Klargest Reed Beds - a natural filtration system. 'Sunscoop' energy-free lighting which brings natural daylight into the home.
- 'Thermafleece' sheep's wool insulation and lime based products.
- The Electrolux range of ovens and cookers with "A" energy ratings.
- Armitage 'Sensorflow' Washroom systems that manage the economic delivery of water for washbasins and showers etc.



Branches

	Telephone
*^ AXMINSTER, Woodmead Road, Axminster, EX13 5PJ	01297 33146
^ BRIDGWATER, 139 Bristol Road, Bridgwater, TA6 4AQ	01278 422654
BRIDPORT, Sea Road, Bridport, DT6 3DW	01308 422324
CREWKERNE, Station Road, Crewkerne, TA18 8AW	01460 73961
^ EVERCREECH, Southwood, Shepton Mallet, BA4 6LX	01749 830231
* EXETER, Silverton Road, Matford Business Park, Exeter, EX2 8ND	01392 829080
^ GLASTONBURY, Porchestall Drove, Glastonbury, BA6 9NW	01458 834770
*^ HONITON, Station Approach, Honiton, EX14 2EZ	01404 42161
*^ ILMINSTER, Station Road, Ilminster, TA19 9AY	01460 54551
LAIRA BRIDGE, 1 Billacombe Road, Plymstock, PL9 7HT	01752 401100
LEDBURY, Hereford Road, Ledbury, HR8 2PR	01531 631633
LISKEARD, Moorswater Ind. Est. Liskeard, PL14 4LA	01579 345293
* MALVERN, Crown Works, Pickersleigh Road, Malvern, WR14 2QP	01684 573297
* NEWTON ABBOT, Brunel Road, Brunel Ind. Est. Newton Abbot, TQ12 4PE	01626 361146
* PLYMPTON, Bell Close, Newnham Ind. Est. Plymouth, PL7 4JH (trade only)	01752 348877
REDRUTH, Dudnance Lane, Pool, Redruth, TR15 3QT	01209 711929
*^ ROSS-ON-WYE, Alton Road, Ross-on-Wye, HR9 5JE	01989 562955
SEATON, Harbour Road, Seaton, EX12 2NH	01297 20123
^ SHERBORNE, Digby Road, Sherborne, DT9 3NW	01935 813254
*^ SIDMOUTH, Alexandria Road, Sidmouth, EX10 9HE	01395 578151
TAUNTON, Wellington New Road, Taunton, TA1 5LU	01823 254666
* TROWBRIDGE, Canal Road Ind. Est. Trowbridge, BA14 8RL	01225 712020
VERWOOD, Blackhill, Off Ringwood Road, Verwood, BH31 6HA	01202 823341
* WESTON-SUPER-MARE, 62 Gazelle Road, Weston-Super-Mare, BS24 9ES	01934 630380
*^ WORCESTER, The Building Centre, Tolladine Road, Worcester, WR4 9EG	01905 723535
*^ YEOVIL, 100 Hendford Hill, Yeovil, BA20 2QU	01935 423311

* Tool hire departments in these branches.

^ Bathroom & kitchen showroom in these branches.

All products are subject to availability and Bradfords standard terms and conditions. The information contained in this brochure is correct at the time of printing. However, in the interests of continuing product development and improvement, we reserve the right to amend any or all of the specifications without notice. All orders are subject to Bradfords standard terms and conditions. Illustrations for guidance only.



www.bradfords.co.uk

Head Office 96 Hendford Hill, Yeovil BA20 2QR. Tel: 01935 845245 Fax: 01935 845242
marketing@bradfords.co.uk

Designed and produced by Clear Communications 01666 501110

